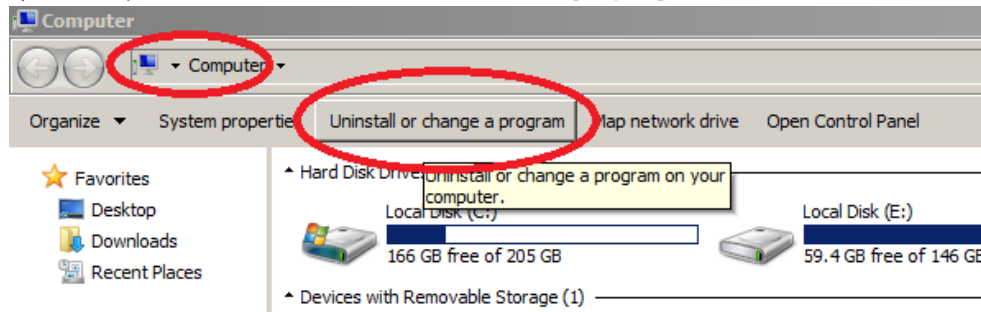


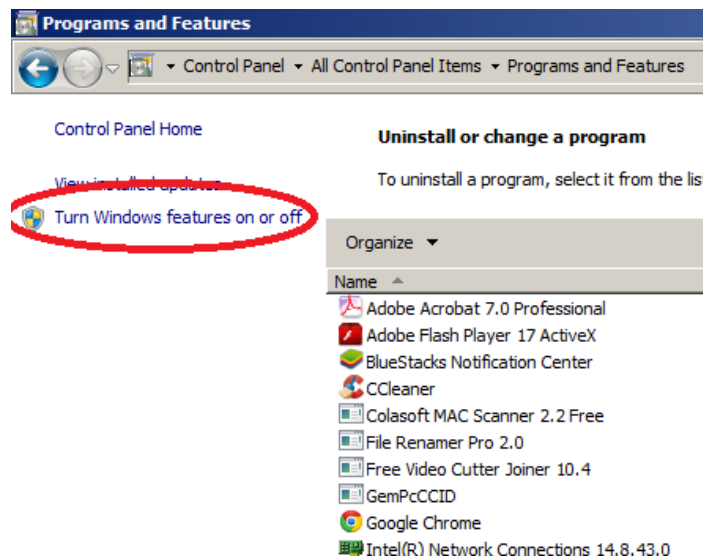
NLRMP Settings for using DSC & Biometric

Initial Step

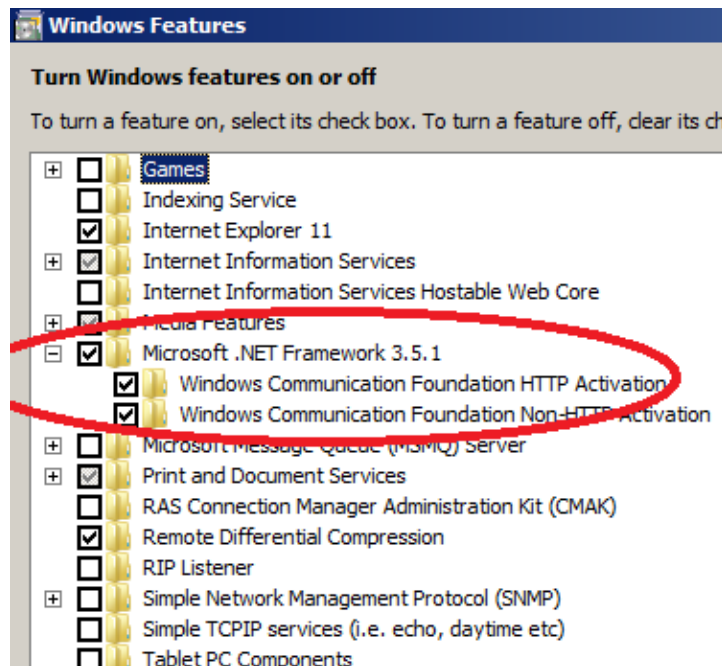
- 1) First open **Computer** → Click on **Uninstall or change program**



- Then click on Turn **Windows features on or off**



Select All options in **Microsoft .NET Framework 3.5.1** and click on **OK** button.



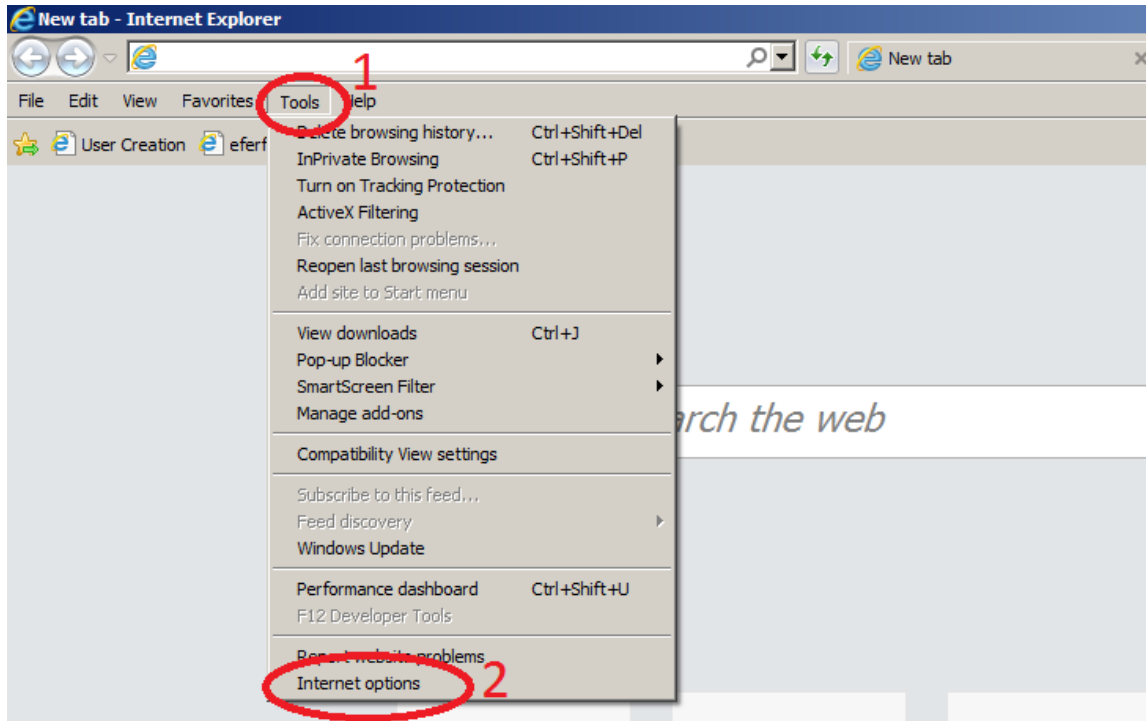
After Completing these steps **reboot** your computer.

Step:1) Install Java **Step:2)** Install SC-SED Driver **Step:3)** Install Signature.msi

Optional Step : If you want to reset all the settings of browser (IE). Follow these Steps

Open Internet Explorer

→ Click on **Tools** → **Internet Options**

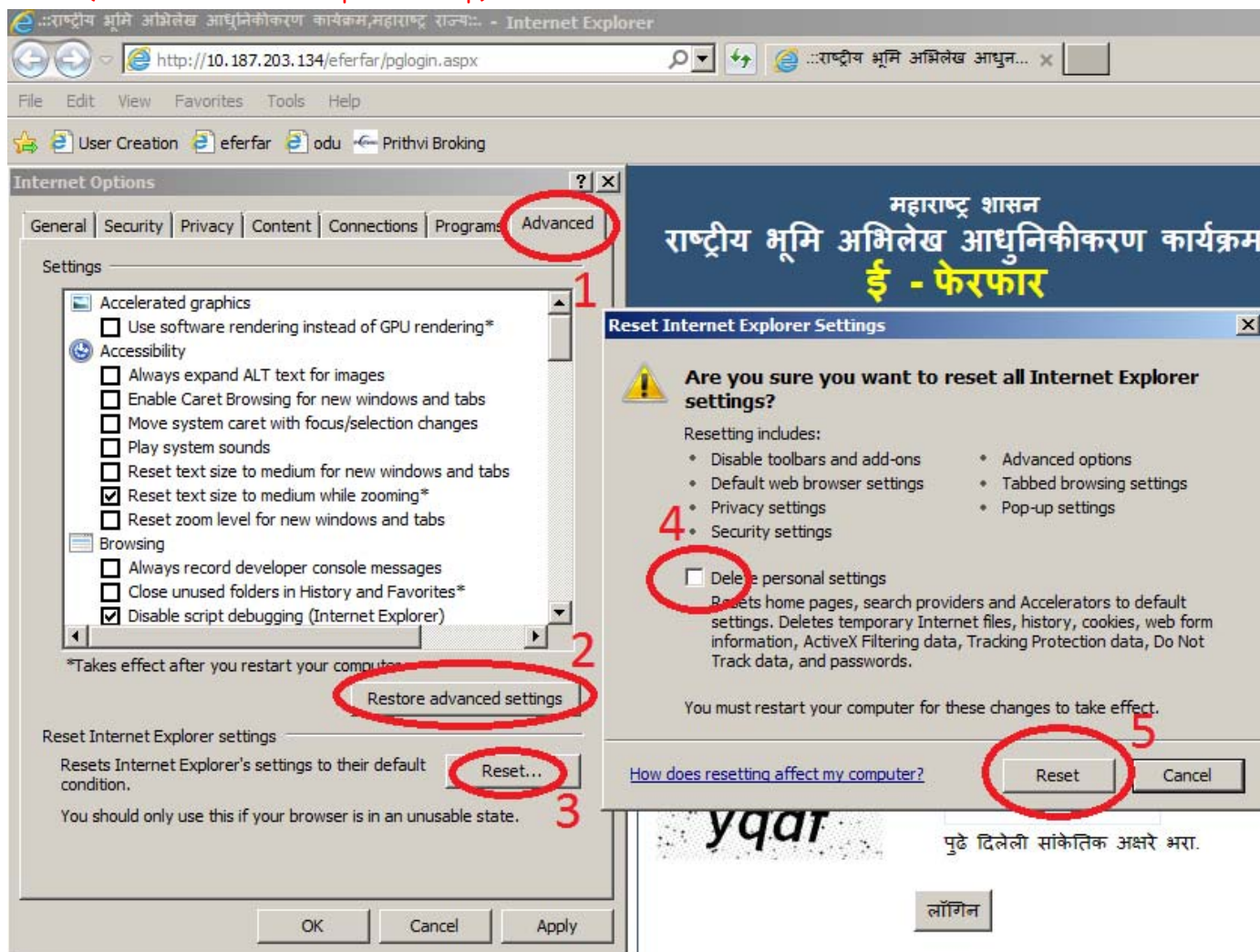


Click on the last tab **Advanced** → **Restore advanced settings** button

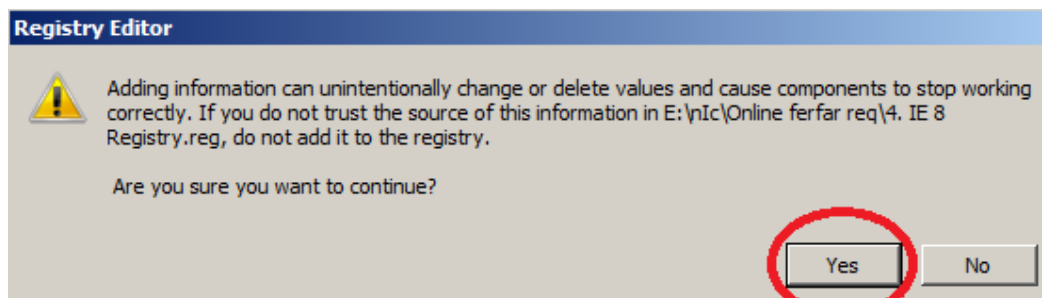
- Click on **reset** button → **Delete Personal Settings** → **Reset**

This will make the default settings to the browser. And browser will work faster

(Note that this is a optional step)



Step : 4) Now Click on 4. **IE 8 Registry file**

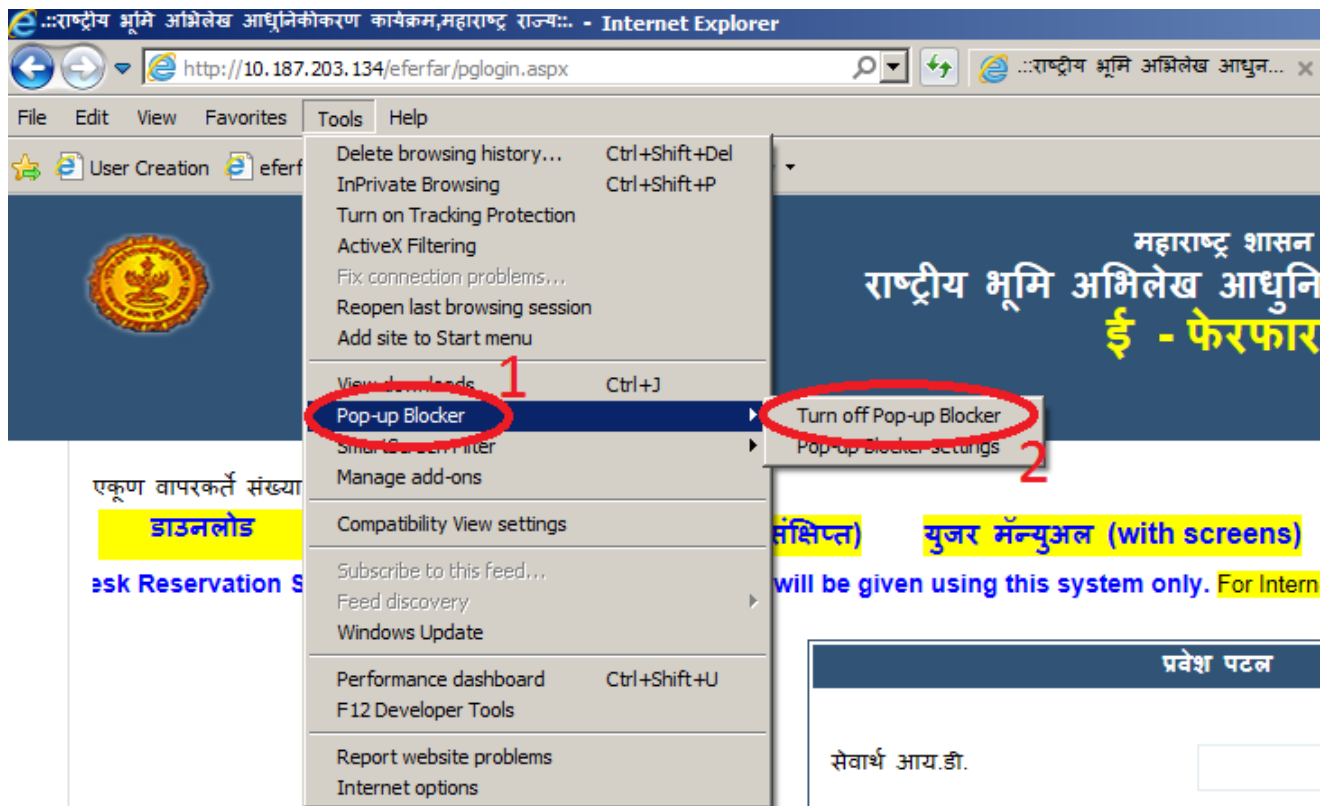


Click on **yes** button, after then **ok** button.

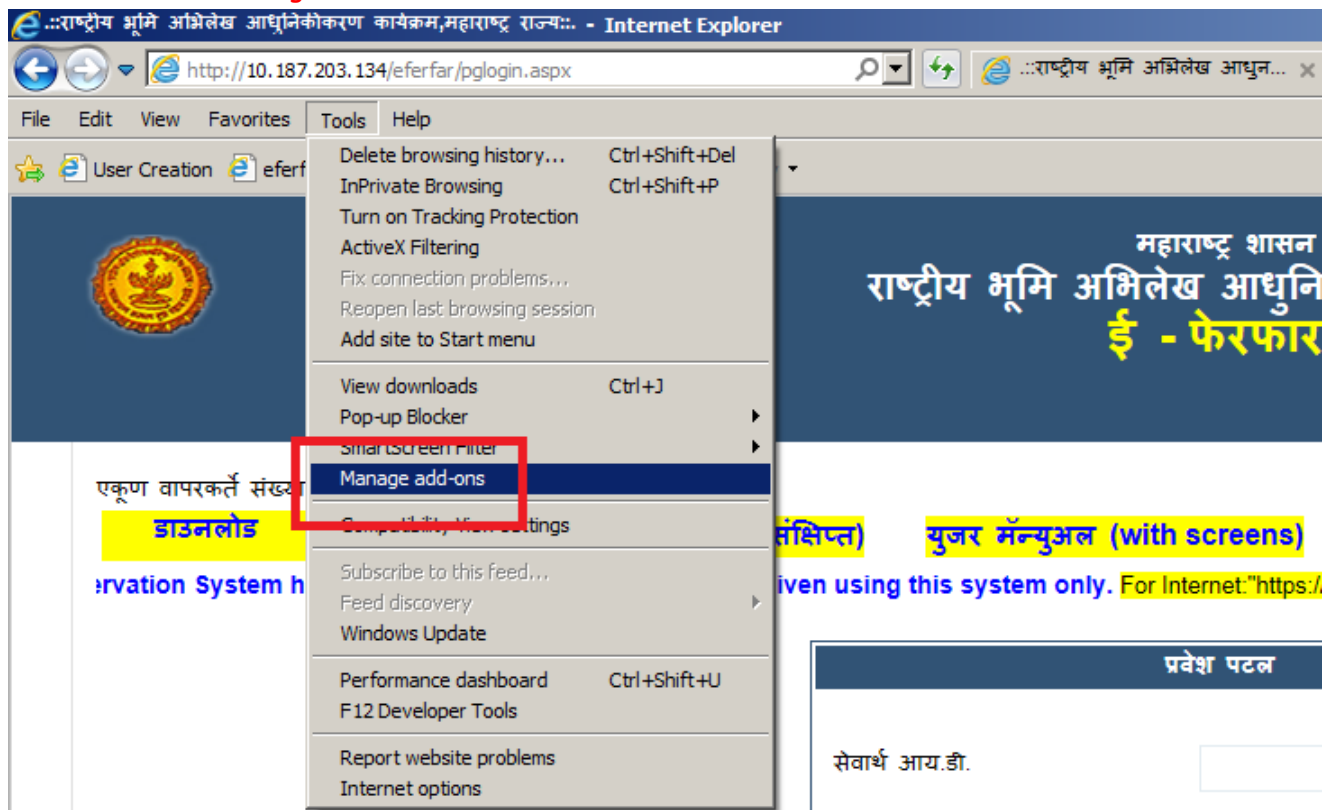
Step : 5) Open the eferfar website in internet explorer

<http://10.187.203.134/eferfar/pglogin.aspx>

Click on **Tools** → **Pop-up Blocker** → **Trun off Pop-up Blocker**

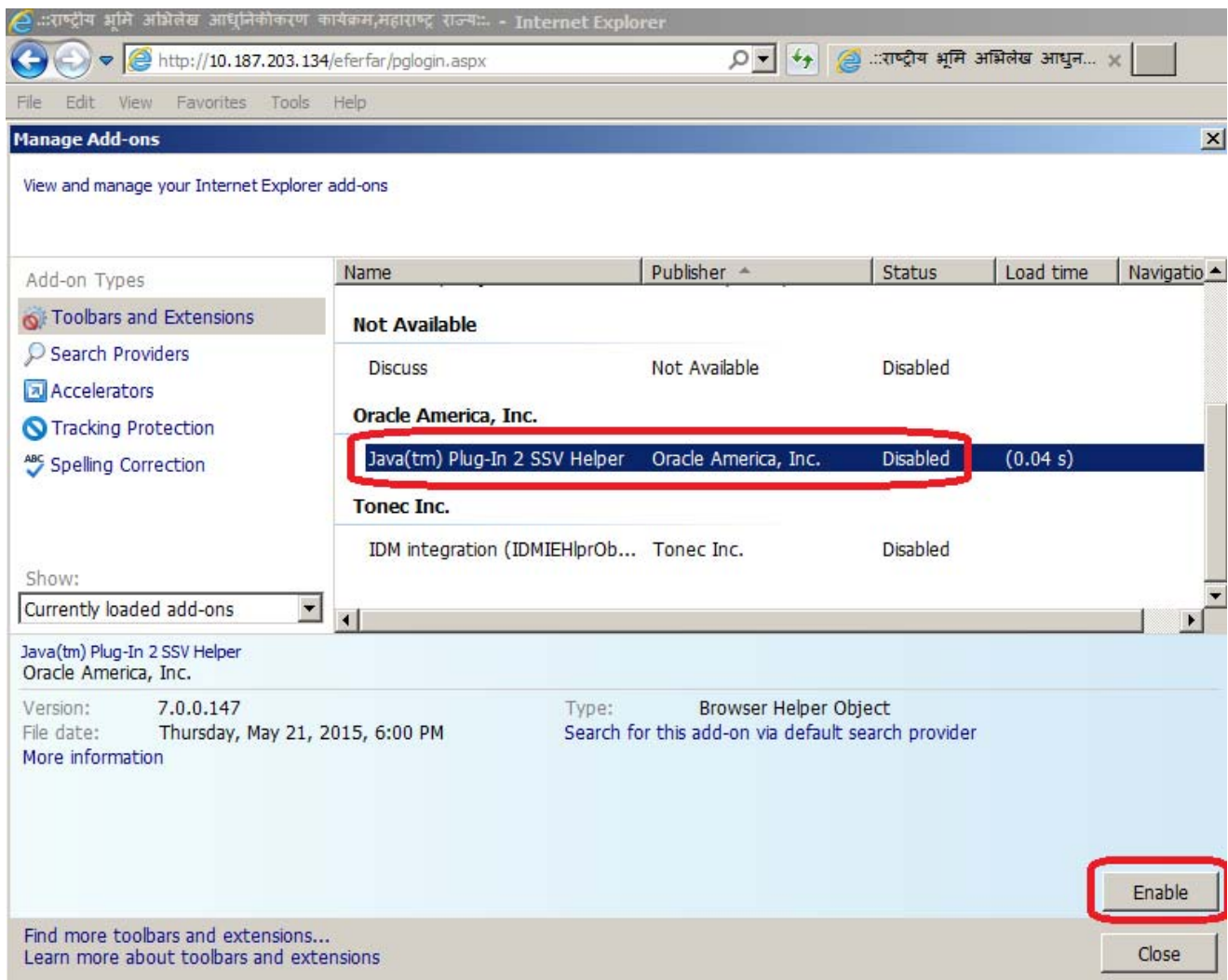


Click on **Tools** → **Manage add-ons**



Select Java(tm) Plug-In 2 SSV Helper

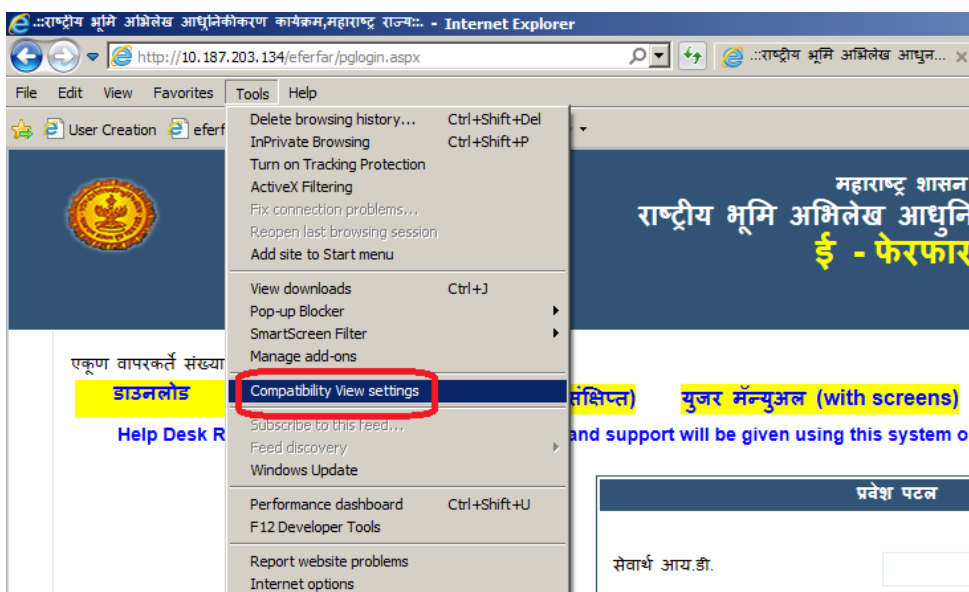
Click on **Enable** button



The screenshot shows the 'Manage Add-ons' window in Internet Explorer. The 'Add-on Types' list on the left includes 'Toolbars and Extensions', 'Search Providers', 'Accelerators', 'Tracking Protection', and 'Spelling Correction'. The main table lists several add-ons, with 'Java(tm) Plug-In 2 SSV Helper' by 'Oracle America, Inc.' highlighted in blue and circled in red. Its status is 'Disabled' and its load time is '(0.04 s)'. Below the table, the details for the selected add-on are shown: 'Java(tm) Plug-In 2 SSV Helper', 'Oracle America, Inc.', 'Version: 7.0.0.147', 'File date: Thursday, May 21, 2015, 6:00 PM', 'Type: Browser Helper Object', and 'Search for this add-on via default search provider'. An 'Enable' button is circled in red at the bottom right of the window.

Name	Publisher	Status	Load time	Navigation
Not Available				
Discuss	Not Available	Disabled		
Oracle America, Inc.				
Java(tm) Plug-In 2 SSV Helper	Oracle America, Inc.	Disabled	(0.04 s)	
Tonec Inc.				
IDM integration (IDMIEHlprOb...	Tonec Inc.	Disabled		

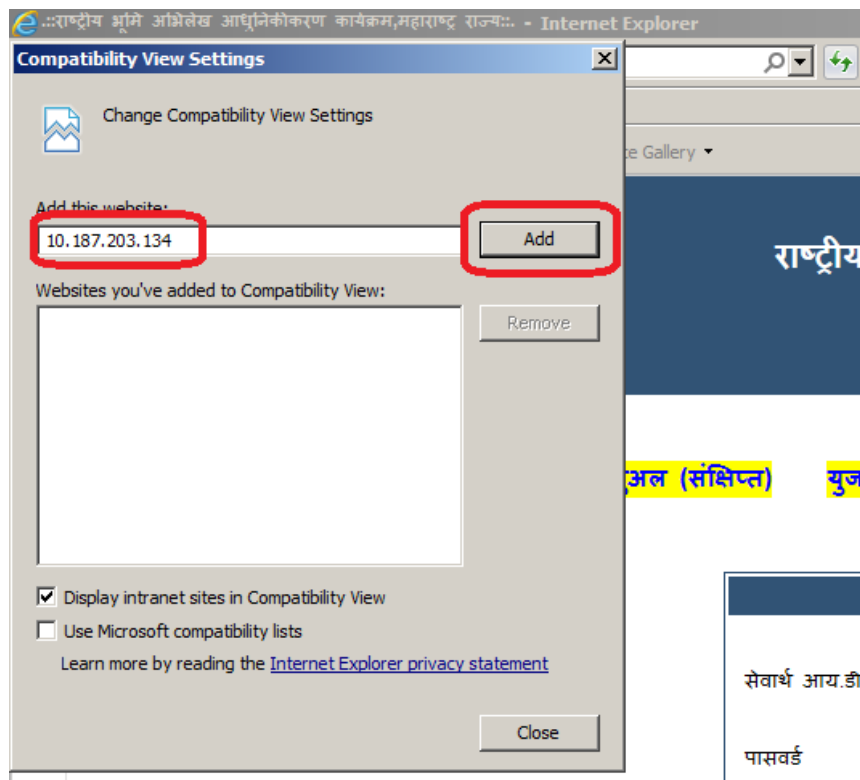
Click on **Tools** → **Compability View settings**



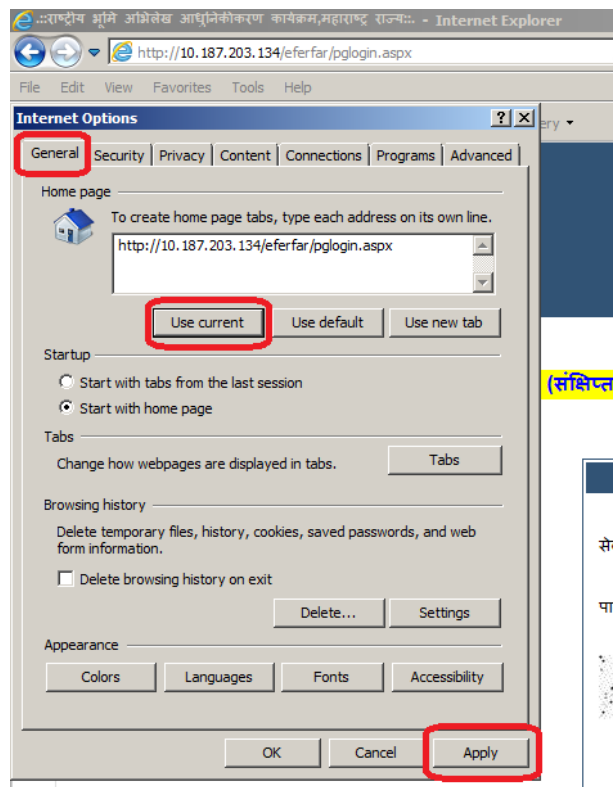
The screenshot shows the 'Tools' menu in Internet Explorer. The 'Compatibility View settings' option is highlighted with a red circle. The background shows a webpage with text in Marathi, including 'महाराष्ट्र शासन', 'राष्ट्रीय भूमि अभिलेख आधुनिकीकरण कार्यक्रम, महाराष्ट्र राज्य', and 'ई - फेरफार'.

Conform that the eferfar website ip address is displaying

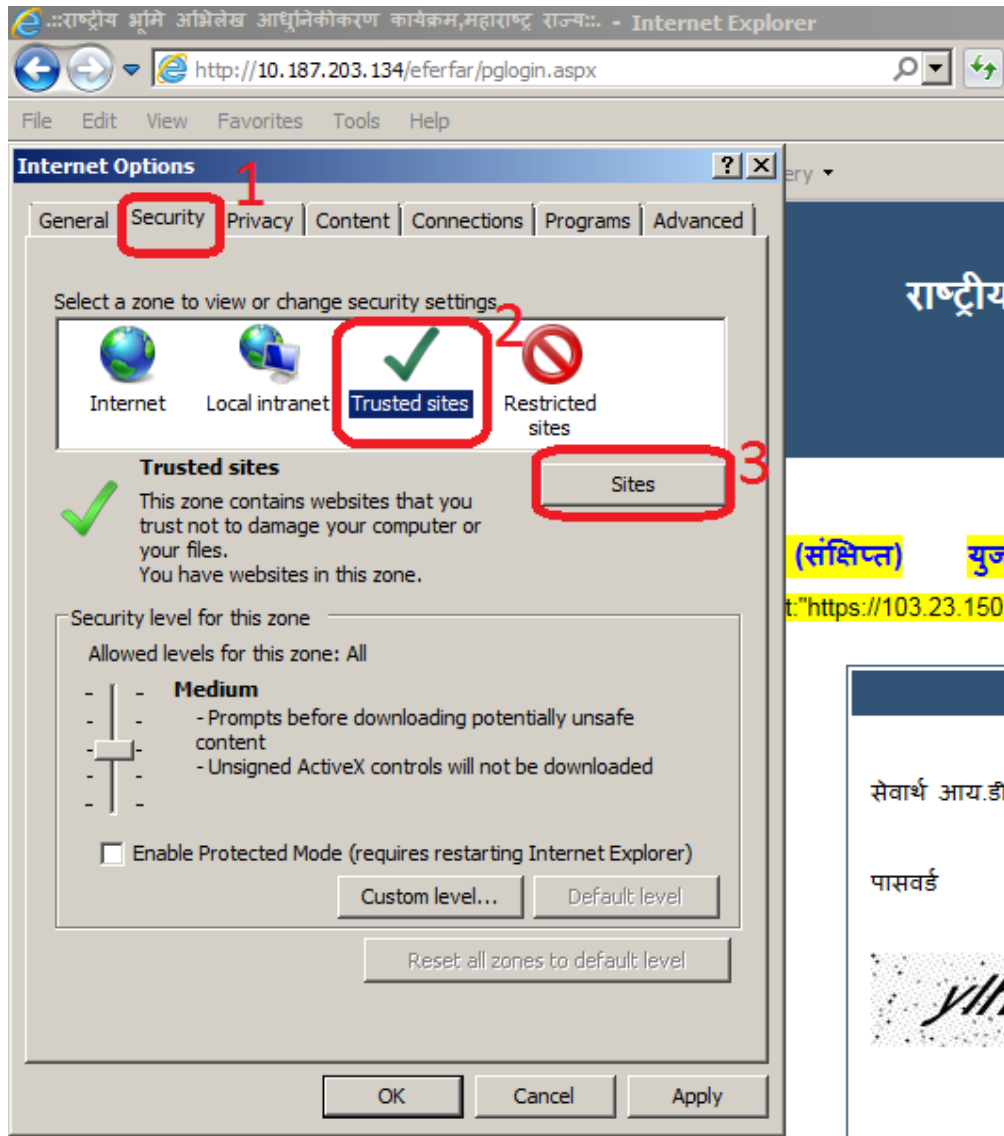
If it is not displayed, enter this ip **10.187.203.134** → Click on **Add** button



Click on **Use Current** → then Click **Apply**

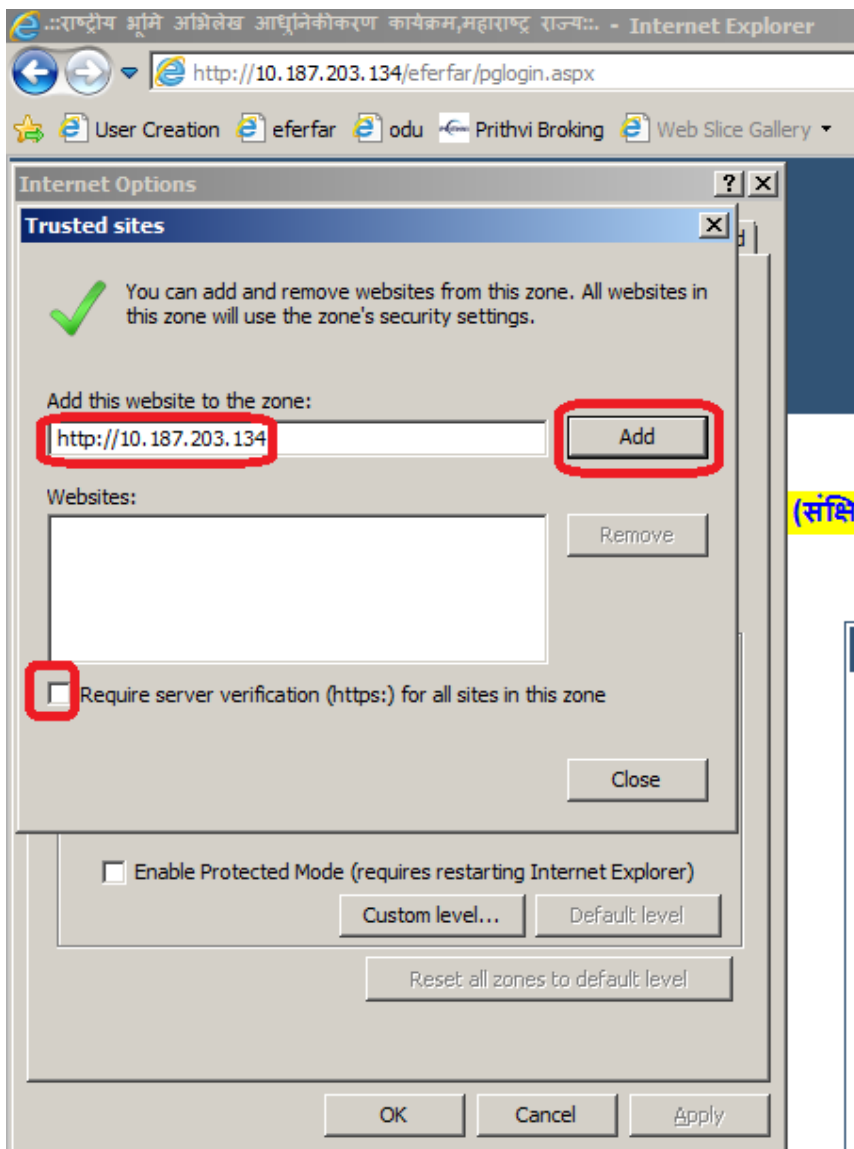
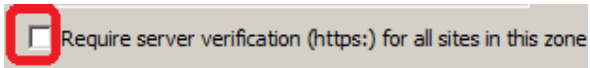


Tools → Internet Options → Click on Security tab → Trusted sites → sites button



Conform that the **eferfar website ip** is listed here i.e **10.187.203.134** → Click **Add** button

Require server verification (https:) should be unchecked.



Reboot your computer and enjoy using **eferfar**